

### Light Efficiency:

## 8 Lumen/Watt

### Light Quality:

**CRI: 66.7**

**Color Temperature:**

3209 K

**Output: 5083 lm**

**Peak: 189261 cd**

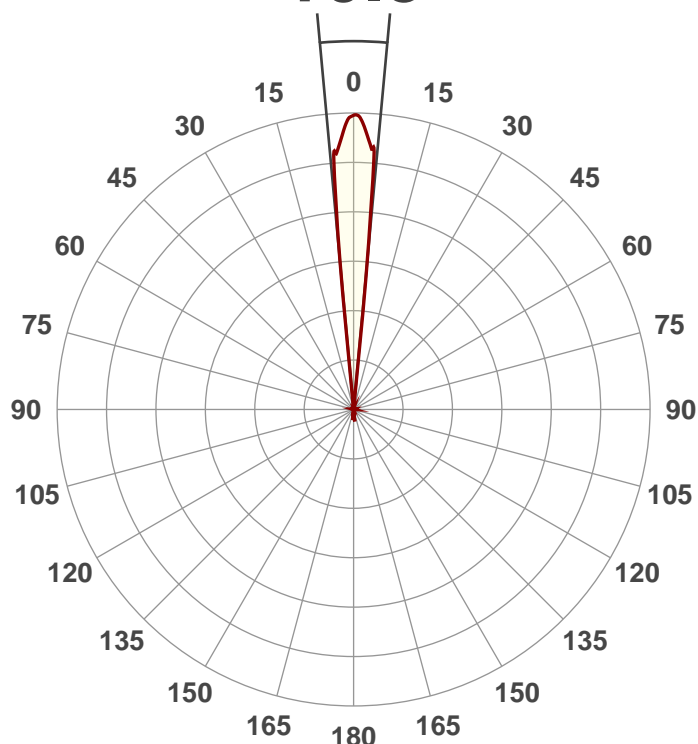
**Power: 626 W**

**PF: 1.0**



### Beam Angle

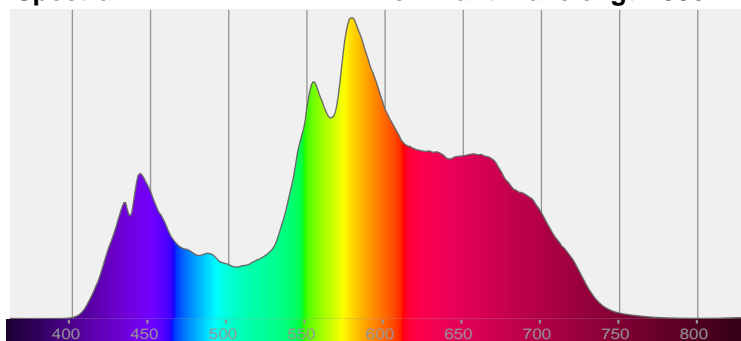
10.5°



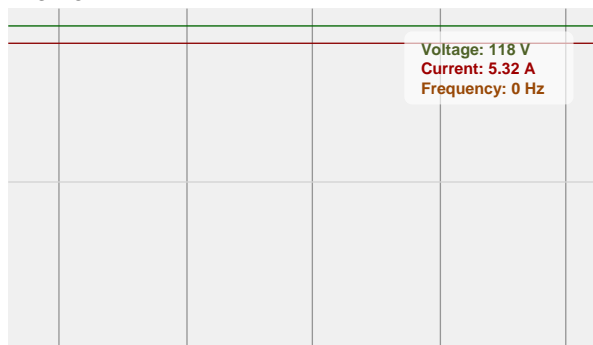
**CIE 1931**  
**x: 0.414**  
**y: 0.379**

## Spectra

**Dominant Wavelength:586nm**

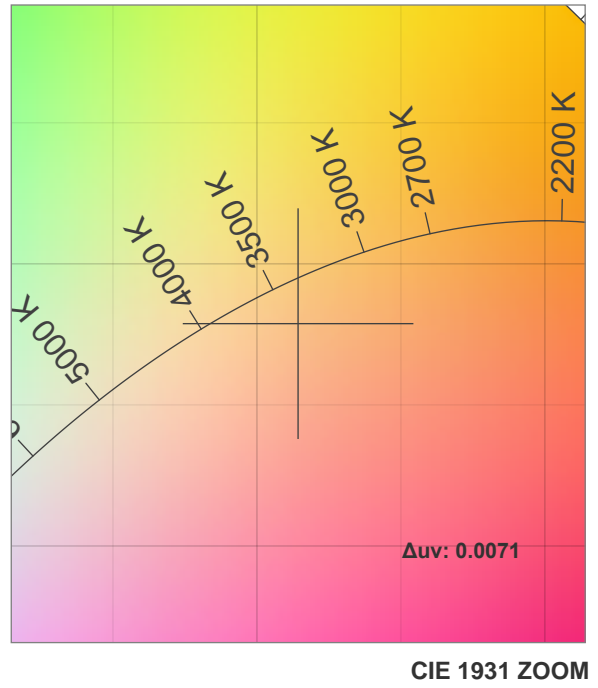
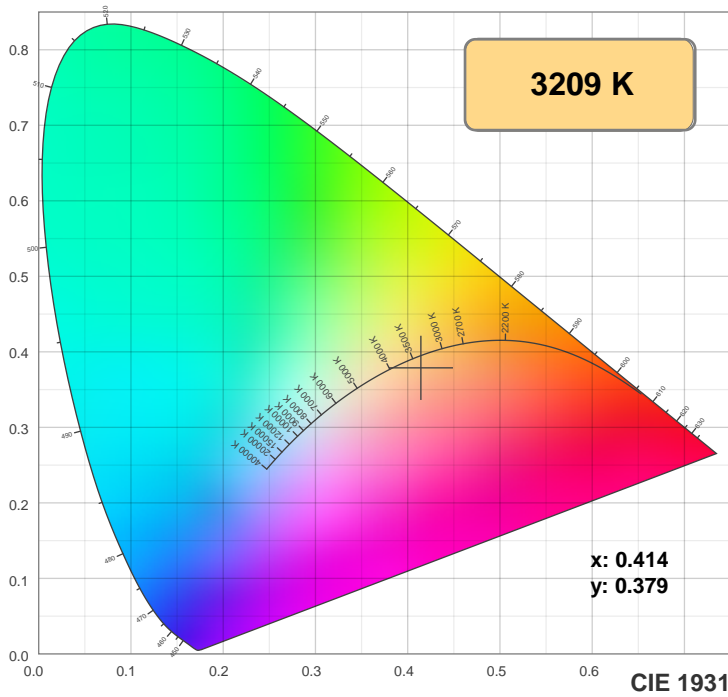


## Power

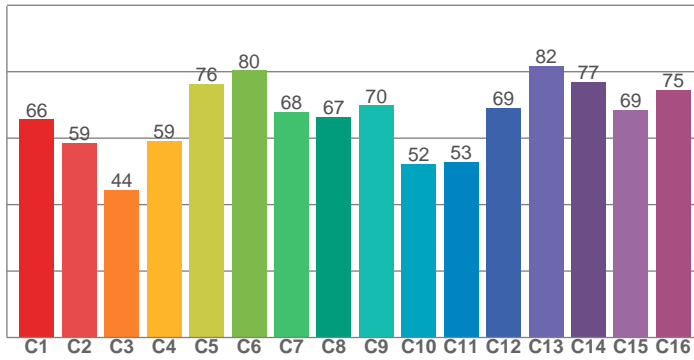


Voltage: 118 V  
Current: 5.32 A  
Frequency: 0 Hz

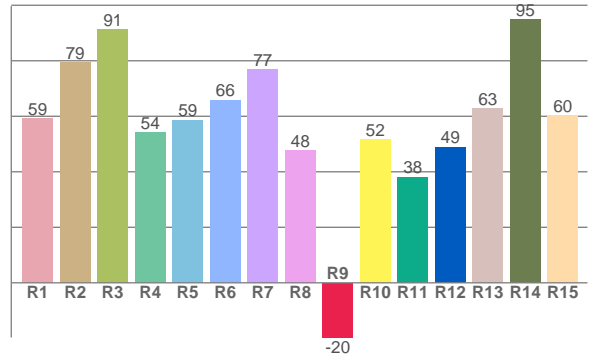
## Color Details



TM30: 65.7



CRI: 66.7 (R1-R8)



CRI R values, only R1-R8 are used to calculate final CRI value

R1	R2	R3	R4	R5	R6	R7	R8	R9	R10	R11	R12	R13	R14	R15
59.4	79.5	91.3	54.1	58.7	65.9	77.1	47.7	-19.7	51.7	38.2	49.0	63.0	95.0	60.3

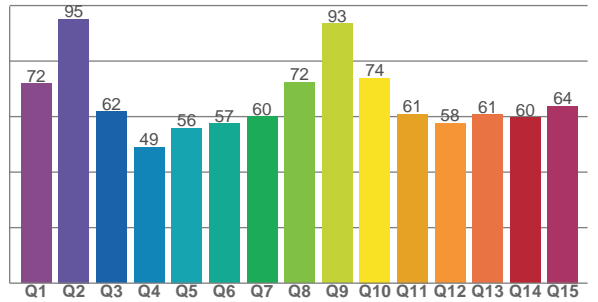
TM30 C values, 16 binned values out of total of 99 C values

C1	C2	C3	C4	C5	C6	C7	C8	C9	C10	C11	C12	C13	C14	C15	C16
65.7	58.6	44.4	59.2	76.3	80.4	67.8	66.5	69.9	52.2	52.8	69.2	81.7	76.9	68.6	74.6

CQS Q values

Q1	Q2	Q3	Q4	Q5	Q6	Q7	Q8	Q9	Q10	Q11	Q12	Q13	Q14	Q15
71.9	95.2	61.8	48.9	55.9	57.4	59.9	72.4	93.5	73.9	60.9	57.6	60.7	59.6	63.8

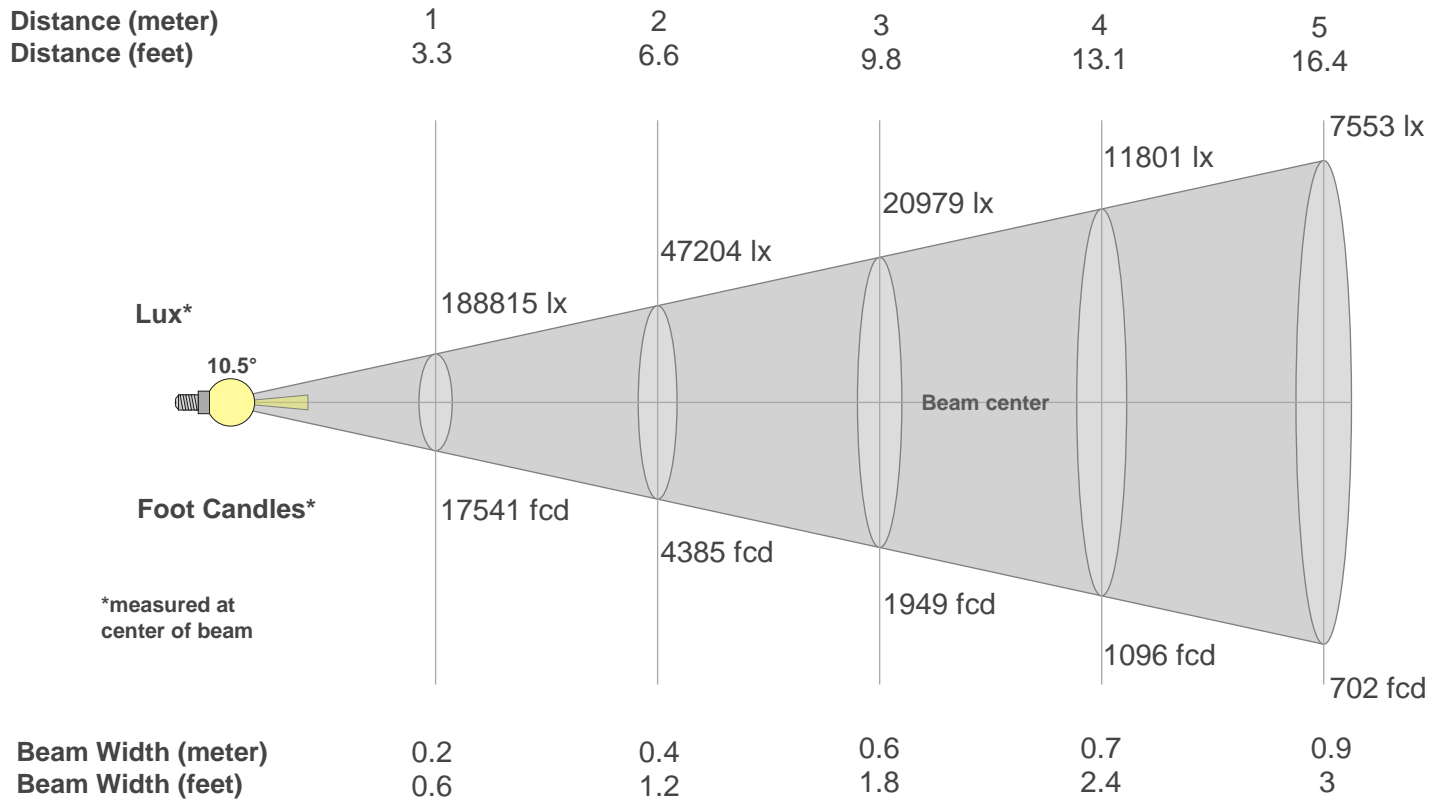
CQS: 63.8



## Color Parameters

Color Temperature	Color Rendering Index	Red Component	Color Fidelity	Color Gamut	Color Quality Scale	Color Coordinate CIE 1931	Color Coordinate CIE 1931	Color Coordinate	Color Coordinate	Color Deviation from Black Body
CCT	CRI	CRI R9	TM30 Rf	TM30 Rg	CQS	x	y	u	v	$\Delta uv$
3209 K	66.7	-19.7	65.7	92.0	63.8	0.414	0.379	0.247	0.338	0.0071

## Beam Details



Beam Intensities from 1-20m

m	1	2	3	4	5	6	7	8	9	10	11	12	13	14	15	16	17	18	19	20
ft	3.3	6.6	9.8	13.1	16.4	19.7	23	26.2	29.5	32.8	36.1	39.4	42.7	45.9	49.2	52.5	55.8	59.1	62.3	65.6
lx	18881 5	47204	20979	11801	7553	5245	3853	2950	2331	1888	1560	1311	1117	963	839	738	653	583	523	472
fcd	17541. 5	4385.4	1949.1	1096.3	701.7	487.3	358	274.1	216.6	175.4	145	121.8	103.8	89.5	78	68.5	60.7	54.1	48.6	43.9

Intensities in 0° C-plane

0°	1°	2°	3°	4°	5°	6°	7°	8°	9°	10°	11°	12°	13°	14°	15°	16°	17°	18°	19°
189K	187K	180K	171K	164K	119K	0K	0K	0K	0K	0K	0K	0K	0K	0K	0K	0K	0K	0K	0K
100%	99%	95%	91%	87%	63%	0%	0%	0%	0%	0%	0%	0%	0%	0%	0%	0%	0%	0%	0%

Intensities in 90° C-plane

0°	1°	2°	3°	4°	5°	6°	7°	8°	9°	10°	11°	12°	13°	14°	15°	16°	17°	18°	19°
189K	187K	180K	171K	164K	119K	0K	0K	0K	0K	0K	0K	0K	0K	0K	0K	0K	0K	0K	0K
100%	99%	95%	91%	87%	63%	0%	0%	0%	0%	0%	0%	0%	0%	0%	0%	0%	0%	0%	0%

Intensities in 180° C-plane

0°	1°	2°	3°	4°	5°	6°	7°	8°	9°	10°	11°	12°	13°	14°	15°	16°	17°	18°	19°
189K	188K	183K	175K	167K	122K	5K	0K	0K	0K	0K	0K	0K	0K	0K	0K	0K	0K	0K	0K
100%	100%	97%	93%	89%	65%	3%	0%	0%	0%	0%	0%	0%	0%	0%	0%	0%	0%	0%	0%

Intensities in 270° C-plane

0°	1°	2°	3°	4°	5°	6°	7°	8°	9°	10°	11°	12°	13°	14°	15°	16°	17°	18°	19°
189K	188K	183K	175K	167K	122K	5K	0K	0K	0K	0K	0K	0K	0K	0K	0K	0K	0K	0K	0K
100%	100%	97%	93%	89%	65%	3%	0%	0%	0%	0%	0%	0%	0%	0%	0%	0%	0%	0%	0%

Beam Angle 50%	Field Angle 10%	Cutoff Angle 2,5%	Intensity Ratio in 120° Cone	Intensity Ratio in 90° Cone
10.5°	11.7°	11.9°	97.1%	96.3%